

Intercomp®



ALIGNMENT SYSTEMS

800-328-3336 USA

intercompcompany.com

Worldwide +1 763-476-2531

The logo for Intercomp, featuring the word "Intercomp" in a bold, white, sans-serif font. A blue swoosh underline starts under the 'I' and curves under the 'p'. A registered trademark symbol (®) is located to the upper right of the 'p'.

Intercomp®

Advanced Weighing Technology...By Any Measure

Our Firm

At Intercomp, we design and manufacture weighing and measurement solutions; serving many different industries and leveraging innovations from each to improve all of our products. Scales and measurement equipment are what we do, what we know, what we're good at. So when deciding what alignment and shop equipment to buy, choose the company with over 35 years of experience, the company headquartered in the USA with a full ISO 9001:2008 registered manufacturing facility, the company chosen by customers all over the world as their preferred precision tool supplier.





Contents

<i>Alignment Systems</i>	4-6
<i>Alignment Equipment</i>	7-8
<i>Air Pressure Gauges</i>	9
<i>Other Tools</i>	10
<i>Terms & Conditions</i>	11

Intercomp Company

3839 County Road 116
Medina, Minnesota 55340 USA

Toll Free: 800-328-3336 USA

Phone: +1 763-476-2531 Worldwide

Fax: +1 763-476-2613 Worldwide

E-mail: info@intercompcompany.com

Customer Service: 800-651-3174

customerservice@intercompcompany.com



High-Tech, Affordable Laser Alignment System



System Includes:

- (4) Digital Caster/ Camber Gauges with Integrated Lasers, Radios & Targets
- (4) Rim Clamps
- (2) Digital Turn Plates with Integrated Radios
- (2) Turn Plate Spacers
- (1) Wireless Node, Laptop & AS™ Series Software

Optional Components:

- Four Wheel Cabinet
- Wheel Stands & Levelers



AS3000™

Complete Alignment System

The AS3000™ Alignment System from Intercomp offers precision laser-based two or four-wheel alignment measurements in an affordable package that is a perfect match for any automotive repair facility that desires a portable, cost effective and profit generating alignment system. Wireless communication between system components and the AS Series software provide technicians with all of the data needed for today's wheel alignment requirements. Our innovative system is designed to work in any service environment, from a drive-on alignment rack, twin post lift or garage floor. Intercomp's AS3000 is the profit generating answer for shops looking to increase their service offering while saving shop space and budget dollars.



Optional Levelers & Cabinet

Software Features:

- Before & After Measurements Displayed with OE Specs
- Automatically Calculates Camber
- Record Caster & Toe
- Calculate Thrust Angle
- Automatically Converts Fractions to Decimal Measurements or Vice Versa
- Save & Customize Records
- Print & Export

Space-Saving, Portable Laser Alignment System

System Includes:

- (4) Digital Caster/ Camber Gauges with Integrated Lasers & Targets
- (4) Rim Clamps
- (2) Mechanical Turn Plates
- (2) Turn Plate Spacers

Optional Components:

- Four Wheel Cabinet
- Wheel Stands & Levelers

AS2000™

Complete Alignment System

The AS2000™ Alignment System from Intercomp provides the precision measurement capabilities of a laser-based system without the high cost or space requirements of a full alignment rack. The AS2000 features industrial-grade components that are durable and compact allowing for optimized bay usage when alignments are not being performed. Our system is the ideal solution for space challenged repair shops that want to add alignment to their service offering without sacrificing space and budget.



Optional Levelers & Cabinet



System Includes:

- (2) Bubble Caster/ Camber Gauges
- (2) Rim Clamps
- (2) Slip Plates
- (2) Adjustable Squaring Stands with Leveling Adjustment
- (1) Tape Measure
- (1) Steel Ruler with Inches & Millimeters
- (1) Box of Chalk
- String



AS1000™

Complete Alignment System

The AS1000™ Alignment System from Intercomp delivers everything your technicians need to perform basic alignment services at an extremely affordable price point. Precision machined gauges and components make for repeatable, accurate alignments while the system is easy to store out of the way when not being used. The AS1000 Alignment System is an intelligent solution to add accurate alignment services with minimal expense.

**Easy-to-Use,
Easy on
the Budget**





**0.1° Increments
2,000lb (1,000kg) Capacity**



**0.5° Increments
2,000lb (1,000kg) Capacity**

Turn Plates— Ultra Low Deflection, Do Not Impair Caster or Camber

Digital Turn Plate

Patent Pending

Part # 102191 (Set of Two)

- Ideal for Class One & Two Vehicles
- Measure Wheel Angle with the Industry's First Digital Turn Plate
- Multiple Direction X & Y Movement
- High-Strength Bearings
- Large, Easy-to-Read, Electronic Display
- 0.1° Graduation
- Range of $\pm 30^\circ$ (60° Total)
- Lightweight Aluminum Construction
- Take Several Easy Measurements to be Used for Alignment
- Standard 9-Volt Battery Operation

Dimensions: 13" x 15" x 1.625" (330 x 380 x 41mm)

Mechanical Turn Plate

Patent Pending

Part # 102007 (Set of Two)

- Ideal for Class One & Two Vehicles
- Same Construction as Intercomp's Premier Digital Turn Plate
- Multiple Direction X & Y Movement
- Utilizes Precise CNC Machined Numbers
- Range of $\pm 35^\circ$ (70° Total)
- Can be Zeroed with Vehicle in Place

Turn Plate Rear Spacer

Part # 100339-09 (Set of Two)

- Maximize Accuracy by Keeping the Rear Level with the Front Plates
- Constructed from Lightweight, Aerospace-Grade, Aluminum

Dimensions: 13" x 15" x 1.625" (330 x 380 x 41mm)

Industry's Only Fully Digital Caster/Camber Gauge

Part # 100005 w/Case & Magnetic Adapter



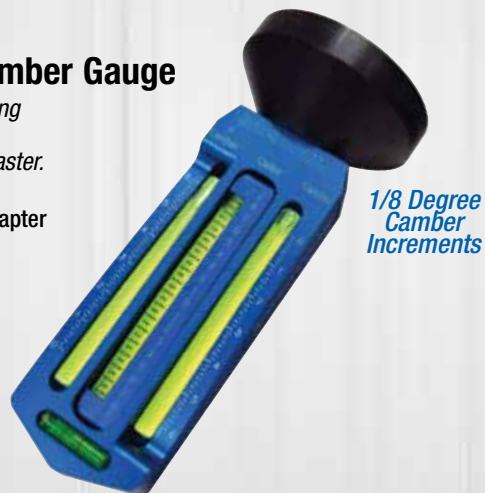
Features Selectable 15° or 20° Caster/Camber Reading

- Indicates to 1/10° & has a ± 20° Caster/Camber Reading
- Selectable 15° or 20° Caster/Camber Reading
- Up To 10 Times Greater Accuracy than Traditional Bubble Gauges
- Standard 9-Volt Battery Gives up to 100 Hours of Operation
- Lightweight, Aluminum Design, with Auto Shut-Off & Backlight
- Inclinometer Mode for Pinion & Strut Angles
- Built-in Diagnostic Mode for Resetting Camber Zero

Industry's Highest Accuracy Billet Bubble Caster/Camber Gauge

Billet CNC machined aluminum housing with easy-to-read bubble display. Measures ± 6° of camber & ± 8° of caster.

Part # 102010 w/Case & Magnetic Adapter



1/8 Degree Camber Increments



CC Gauge Not Included



Rim Clamp

Part # 100007

For Wheels 13" (330mm) / 18" (457mm)

Part # 100009

For Wheels 16" (406mm) / 25" (535mm)

- Commercial Grade Clamp
- Fits Most Any Size Wheel
- Rugged Design Guarantees a Secure Fit
- Use with our Digital or Bubble Caster/Camber Gauge with Magnetic Adapter
- Perfect for Repair Shops & Sports Cars with Expensive Aluminum Wheels



**Factory Certified
Digital Air Pressure Gauges
Selectable from .1 to .01 PSI**

Reads to 150 x .1 PSI

Part # 360045-150
with Angle Chuck

Part # 360045-150-BC
with Ball Chuck

Part # 360045-150-D
with Dual Chuck



Angle Chuck

Reads to 99.99 PSI

Part # 360045
with Angle Chuck

Part # 360045-BC
with Ball Chuck



Ball Chuck

6" (153mm)
Dual Chuck

- Extremely Accurate, Easy-to-Use & Durable
- Accuracy of 0.1%
- Giant 0.5", Backlit Display Characters
- Thumb Operated Bleed Off
- Dual Bleeder Allows for Faster Bleeding
- 22' (559mm) Hose
- Displays in PSI, BAR & kg/cm²
- Standard 9-Volt Battery Operation
- Includes Case



Reads to
150.0 PSI

The Air Chuck Never needs to leave the Valve Stem!

Digital Fill, Bleed & Read Air Pressure Gauge

Part # 360094
with Angle Chuck

Part # 360094-BC
with Ball Chuck

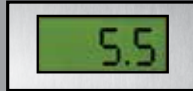
- Attaches Directly to Your Air Hose
- 0 to 150 PSI (0 to 10 BAR)
- Readout in 0.1 Increments
- Delivers Unsurpassed Accuracy
- 22' (559mm) Hose with Swivel Nozzle
- Industrial-Grade Bleeder Valve
- Displays in PSI, BAR & kg/cm²
- Available with Ball or Angle Chuck
- Standard 9-Volt Battery Operation
- Includes Case

Digital Combination, Leak Down / Compression Tester

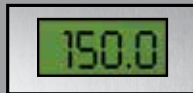
Part # 170134

Leak Down

Compression



Leak Down Mode



Compression Mode



- Repeatability Accuracy for Engine Cylinder & Fuel Injector/Barrel Valve Leak Percentages
- Reads to 400PSI
- Locking Regulator Allows Incoming Air Pressure Adjustment
- Intake Air Pressure & Hose Length will Not Affect Readings (Must have 90PSI Input Pressure)
- Meets FAA Standards for Leak Down Testing Engines up to 5.00-Inch Bore
- Optional Hoses Available
- Includes Case



System Includes:

- 14mm Leak Down Hose
- 14mm Compression Hose

Quickly Diagnose Potential Problems!

Infrared Laser Temperature Gun

Part # 360018-E

- -58° to 1,022°F (-50° to 550°C)
- Accuracy ±2% of Reading
- Resolution 0.1°
- Backlit LCD Display
- Standard 9-Volt Battery
- Includes Pouch



Digital Torque Wrench Tester

Part # 102028

Great Tool to Quickly Check if Torque Wrenches are within Spec!

- Peak Hold Feature Saves Maximum Reading
- Push-Button Conversion from lb-ft to lb-in & Nm
- Accommodates 0.5" Drive Torque Wrenches
- Standard 9-Volt Battery Operation
- Backlight LCD Display

Accuracy: ±0.25% of Reading

Range: 0 to 200lb-ft/ 0 to 2,400lb-in/ 0 to 271Nm



Order Information

New dealer/distributor accounts must submit a credit application signed & dated by a manager. Please contact us to learn more.

Order hours: Monday thru Friday 8:00 am - 5:00 pm Central Time
Toll Free: (800) 328-3336 USA
Phone: (763) 476-2531 Worldwide
Fax: (763) 476-2613 Worldwide
Mail: Intercomp Company
 3839 County Road 116
 Medina, Minnesota 55340 USA



Shipping Options: UPS, FedEx, Motor Freight & USPS

- Please note that products cannot be shipped by UPS, Motor Freight or FedEx to a PO Box or APO
- Freight charges are F.O.B. Medina, Minnesota USA
- Method of Payment: Visa, Mastercard, Discover, American Express, Money Order & Bank Wire

Terms, Warranty & Return Policy

Terms

All products listed herein are F.O.B. Medina, Minnesota 55340 USA. Terms are such as the company may extend to the purchaser not to exceed Net in 30 days from the date of invoice. Past due accounts will be charged 1.5% of total order value per month &/or may be subject to re-stocking or cancellation fees. UPS is the standard mode of shipping. Shipping & handling charges are not included in the net prices. Insurance will be added to all orders shipped via UPS unless instructed otherwise. Intercomp shall not be liable for loss, damage, detention, or delay resulting from causes beyond its reasonable control or caused by fire, strike, civil, or military authority.

Warranty

Subject to the terms & conditions as stated herein, Intercomp Company, (hereafter referred to as "Intercomp"), warrants its scales to be free from defects in material & factory workmanship for a period of twenty-four months, analog gauges for a period of three months, all other equipment twelve months from the date of shipment from Medina, MN USA.

Terms & Conditions of Limited Warranty

This obligation is limited exclusively to defective original equipment manufactured or supplied by Intercomp & is subject to the inspection & analysis by Intercomp as to conclusively identify or confirm the nature & cause of failure. Intercomp's responsibility is confined to repair, replace or credit & does not extend coverage to labor, material or service charges involved in removal or installation of equipment.

Defective components mechanical or electrical, will be repaired or replaced at Medina, Minnesota, provided the user ships the equipment freight prepaid to Medina, Minnesota, in accordance with the Intercomp return to manufacturer authorization procedure. Intercomp is not responsible & will not be held liable for losses, injury or damage caused to persons or property by reason of the installation of Intercomp products or their mechanical failure.

This warranty is not applicable for expenses either direct or consequential that may arise for the use of or inability to use these products.

Statement of Limited Warranty

This warranty shall not apply to equipment which:

- Has had repairs or modifications not authorized by Intercomp which, in Intercomp's judgement, has affected the performance or reliability.
- Has been subject to misuse, negligent handling, improper installation, accident, damage by fire, water or act of God.
- Has had serial numbers altered, defaced or removed.

Freight Carrier Damage

Claims for equipment damaged in transit must be referred to the freight carrier. Visible damage should be reported immediately, concealed damage as soon as possible, or in any case, within ten (10) days of receipt of shipment, in accordance with freight carrier regulations.

Return of Standard Equipment

At Intercomp, we want you to be completely satisfied with any product purchased from us. If it does not work, or is not correct, return it freight prepaid for full credit or replacement less shipping, within 30 days of delivery from Intercomp. We may, at our option, assess a restocking charge if the equipment was:

- Not correctly specified for the application intended.
- Damaged beyond reasonable recovery.

The restocking charge is directly proportional to the amount of time & material expense required by us to return the item to resale condition. If an item was held in excess of 30 days, a minimum restocking charge of 15% will be assessed.

Return Procedure

When returning equipment for repairs these simple steps will help to expedite your request:

- Call 800-328-3336 or 763-476-2531 & ask for the Customer Service Department. A Service Team Member will issue you an (RMA) Return to Manufacturer Authorization Number. Goods received without an RMA# may be refused.
- Provide a written description of the problem you are experiencing & enclose it with the shipment.
- Please write the RMA# on the outside of the package to help us speed your package through our receiving process.
- Provide Proof of Receipt sending original dated receipt with product return.

Product Directory

Product Description	Page
Alignment Systems	4-6
Air Pressure Gauges	9
Caster Camber Gauges	8
Fill, Bleed & Read Gauges	9
Infrared Laser Temperature Gun	10
Leak Down/Compression Tester	10
Rim Clamps	8
Torque Wrench Tester	10
Turn Plates	7



We will make every effort to repair any Intercomp product, regardless of age or condition. Please be aware that a minimum repair charge is subject to all items not covered by warranty.



Portable Alignment Systems & Professional Grade Tools

info@intercompcompany.com

Worldwide: +1 763-476-2531

Toll Free: 800-328-3336

Intercomp
 advanced weighing technology... by any measure

intercompcompany.com

Specifications subject to change without notice.

CE ISO 9001:2008
 Registered


 Made In U.S.A.